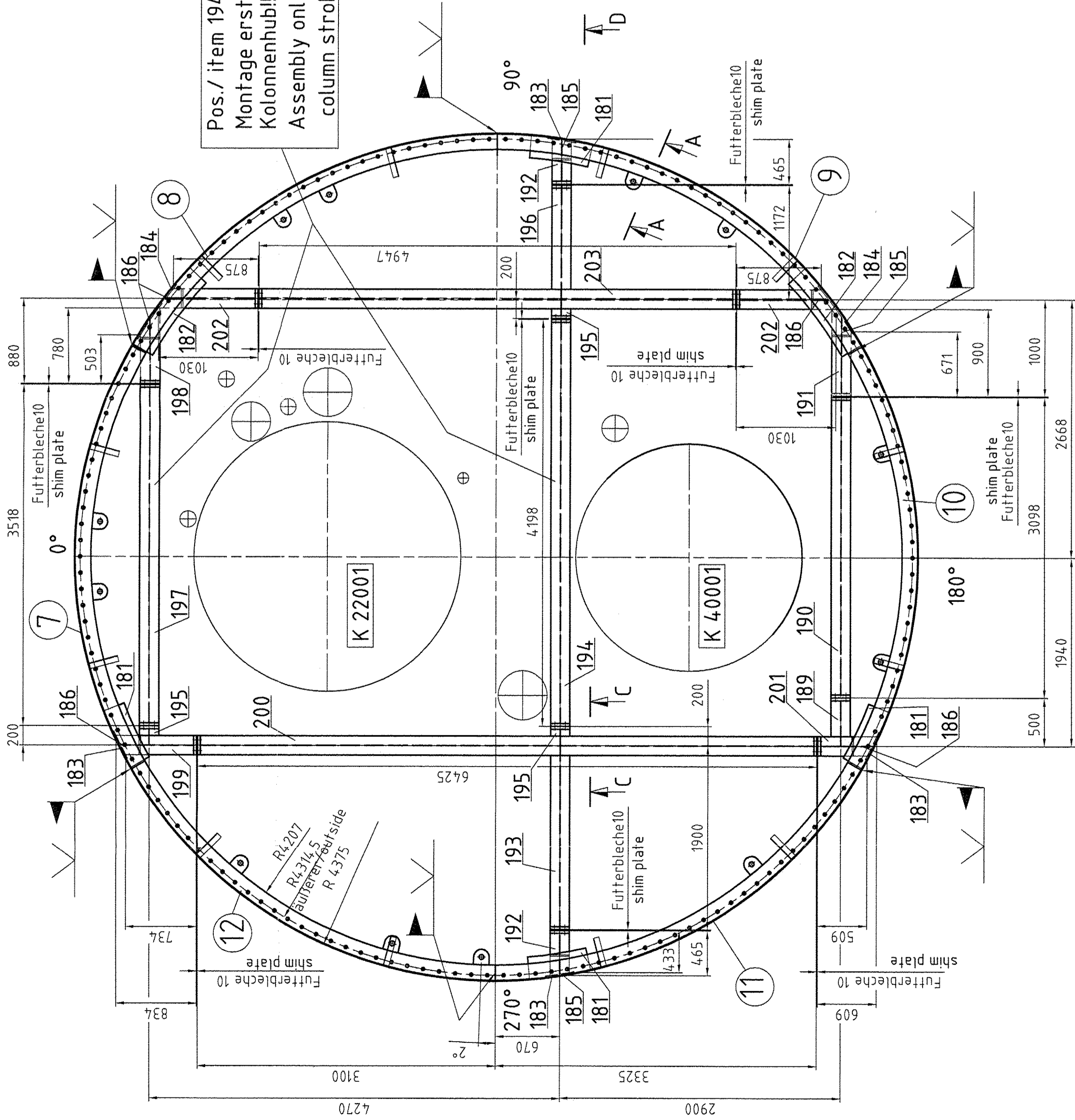
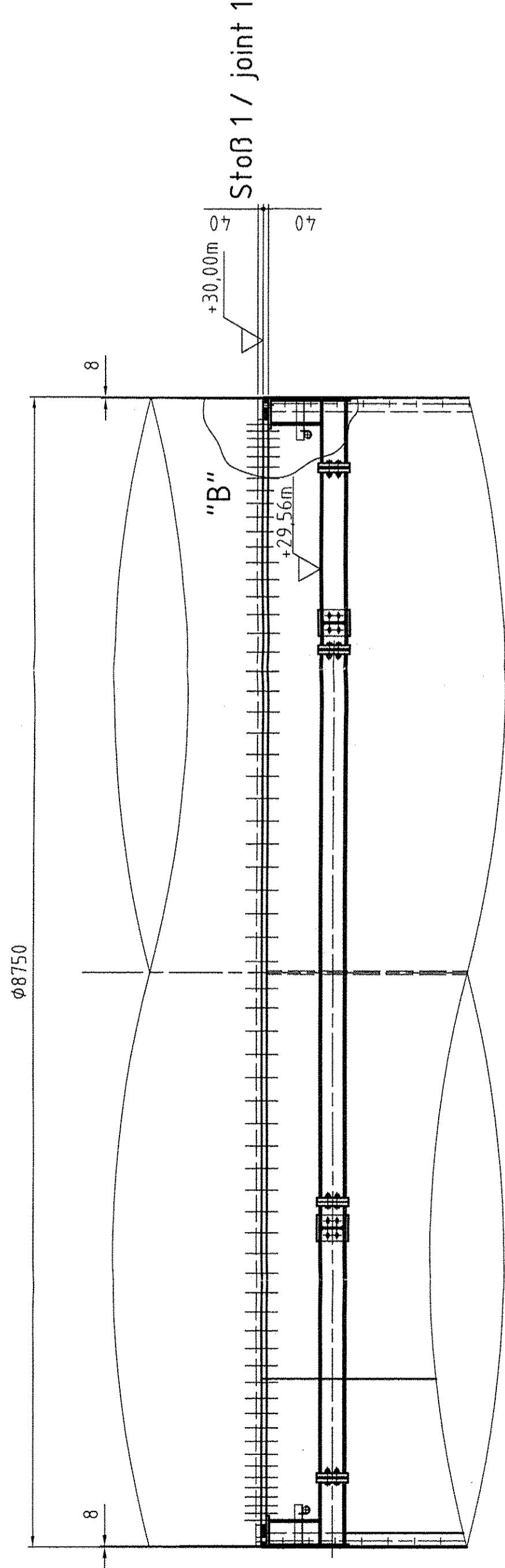
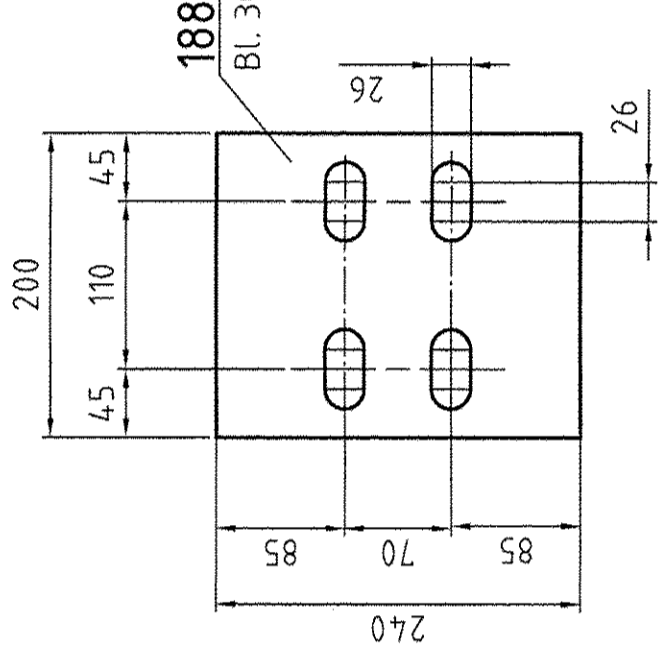


Schnitt D-D / section D-D



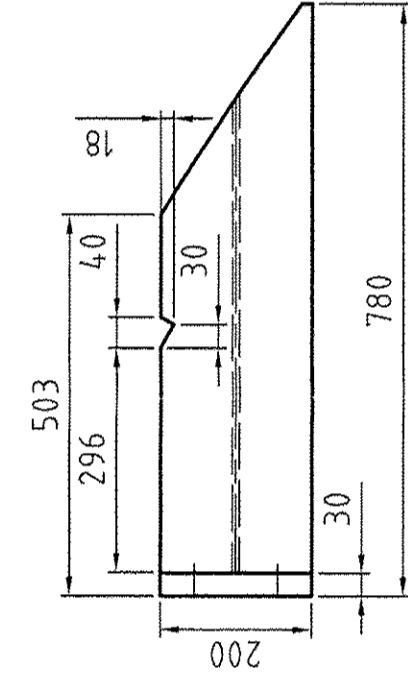
Detail Pos. 188

M 1:5
24x fertigen /24 x produce



Detail Pos. 198

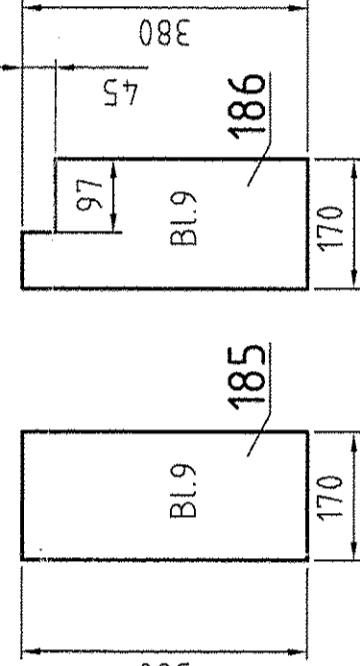
M 1:10



Detail Pos. 185/186

M 1:10

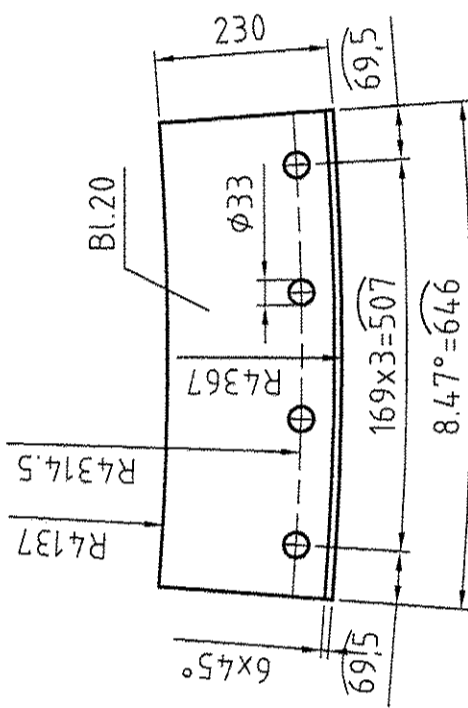
185 - 3x fertigen/ 3x produce
186 - 5x fertigen/ 5x produce



Detail Pos. 181

M 1:10

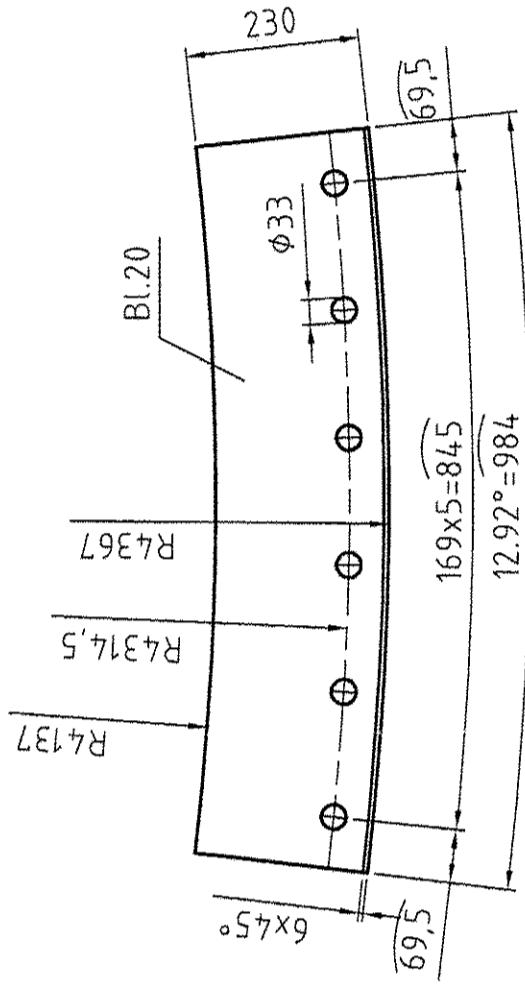
4 x fertigen/ 4x produce



Detail Pos. 182

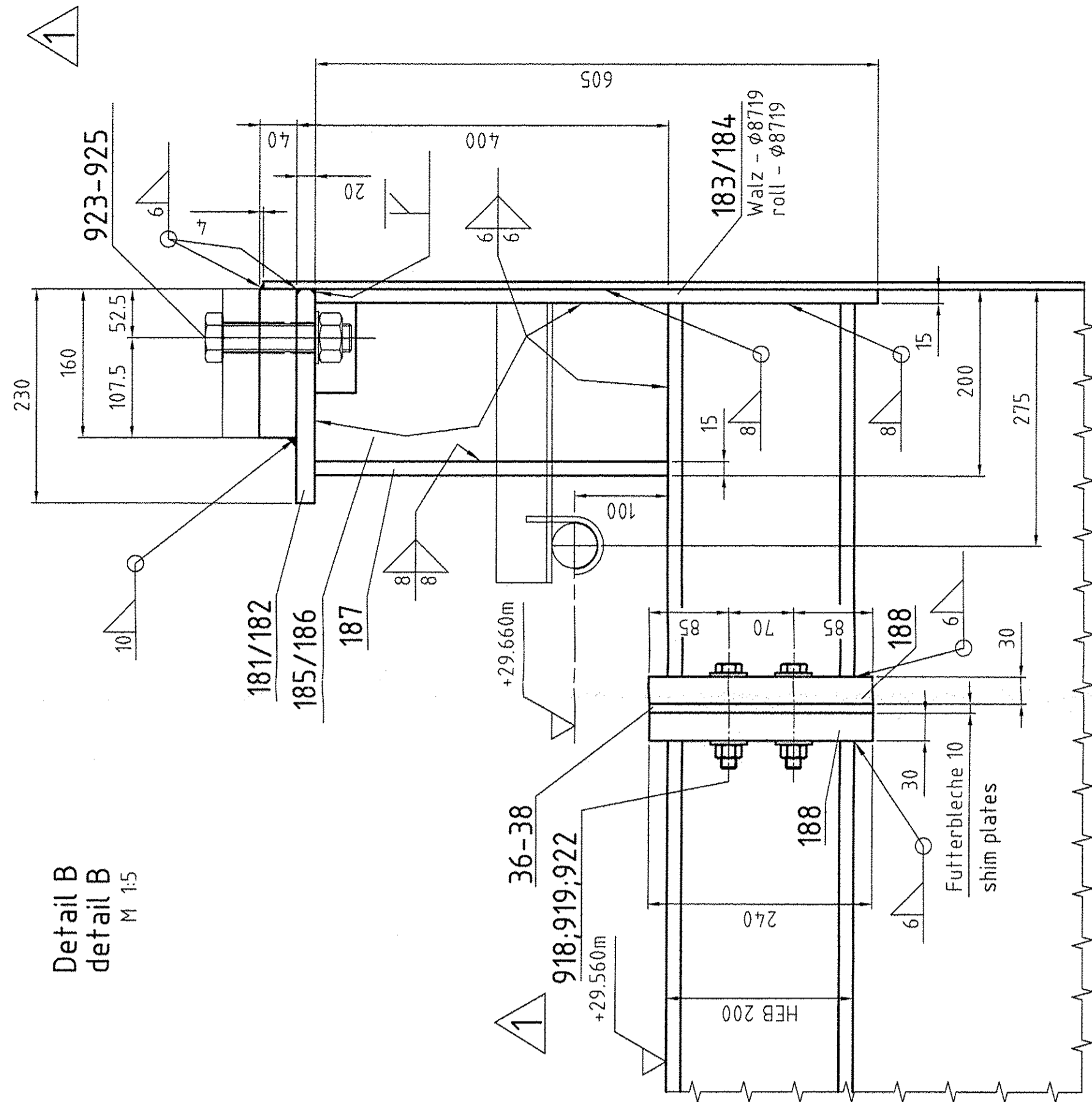
M 1:10

2 x fertigen/ 2x produce



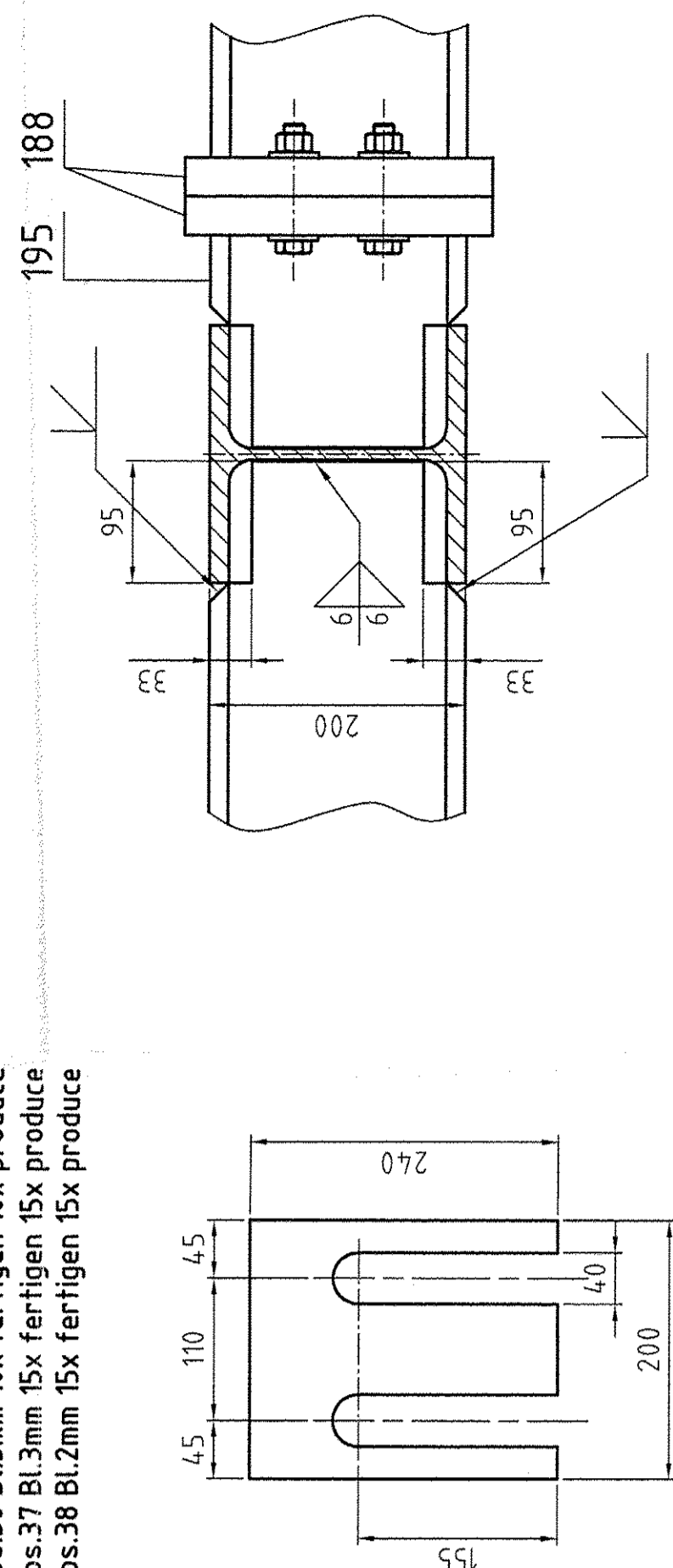
Detail B

detail B
M 1:5



Futterbleche (36-38)
shim plates M 1:5

Pos.36 BL5mm 10x fertigen 10x produce
Pos.37 BL3mm 15x fertigen 15x produce
Pos.38 BL2mm 15x fertigen 15x produce



Zeichnung gehört zu:
Drawing belongs to:

05-101-400

Hierzu gehört Zeichnung: 05-101-401-404; 05-101-405 bis -415
See also drawing:

E	Werkstoff : Material	Werkstückkanten Part edges	Maßstab Scale	Algemeintoleranzen General tolerances	Alle mit Sauerstoff in Berührung kommenden Teile öl- und fettfrei Parts in contact with oxygen oil- and fat-free	Xtbl. : Ers.f. : Ers.d. : Mass kg
D	Änd. Mittlg. Change method	Datum Date	Name Name	Norm : Standard		
C	ISO- Methode E	Bezug / Projekt : Reference / Project				
B						
A						
AIR LIQUIDE Coldbox Assembly stage and points of notice K70101 ASU No. 9 Kosice						Blatt-Nr. : Sheet No. : F 2
Benennung : Title : Air Liquide ACS GmbH Hanau						Blatt-Nr. : Sheet No. : F 2
DATE: 14.04.05 NAME: Behrendt CHECKED: Eisel HISTORY FILE: 05-101-405-1-a.dwg						ORIGINAL FORMAT DIN A1
JOB CODE: K70101 ASU No. 9 Kosice						SCALE 1:20
REFERENCE:						SHEET: 1 OF 2 SHEETS
TITLE: Coldbox Assembly stage and points of notice						DRAWING No.: 05-101-405 REV. 1
REPLACES: REPLACED BY:						

1	1	Pos./item 918;919;922-925	DESCRIPTION	BEHRENDT 04.05.05
ARCHIVES REV. NO.	REV.	JOB NO.	DATE	SIGN.
REVISIONS				
1 2 3 4 5 6 7 8 9 10 11 12 13 14 15 16				